

MAY 2010 £4.50

THE WORLD OF INTERIORS

VIVA LA REVOLUTION!
Artist's Radical
New-Build in Mexico





network

Sophia Salaman chooses the best merchandise and events worldwide

■ Visitors to Harrods' third floor will now find a distinctly Italian feel with the arrival of B&B Italia. Since 1966 the company has been a pioneer in contemporary furnishings. The unity of research, industrial knowledge and innovation ensures that each piece is original, authentic and of the highest quality. The firm also collaborates with some of the world's most reputable designers, including Patricia Urquiola, Naoto Fukasawa and Antonio Citterio. Harrods, 87-135 Brompton Rd, London SW1 (020 7730 1234; harrods.com).

■ The annual exhibition of antique folk art will be held from 6 to 15 May at Robert Young's gallery in Battersea. This year's is the 11th to take place and includes an eclectic mix of exhibits, from a Viking bowl to love tokens to weathervanes. Young believes that it's the arresting colours, individuality and naivety of folk art that have made people increasingly recognise its value. Robert Young Antiques, 68 Battersea Bridge Rd, London SW11 (020 7228 7847; robertyoungantiques.com).

■ Beardmore has been making doorknobs, knockers, light switches and letterboxes since 1860. The products are hand-finished and many are made using the original casts. Its latest collections include the nature-inspired 'Organic', and 'Pupuluxe', which is influenced by Futurism and the industrial world. The company's new collection of beautifully veneered 'Lanos' doors is available in a variety of woods, from oak to black bolivar. Beardmore, 321 Fulham Rd, London SW10 (020 7351 5444; beardmore.co.uk).

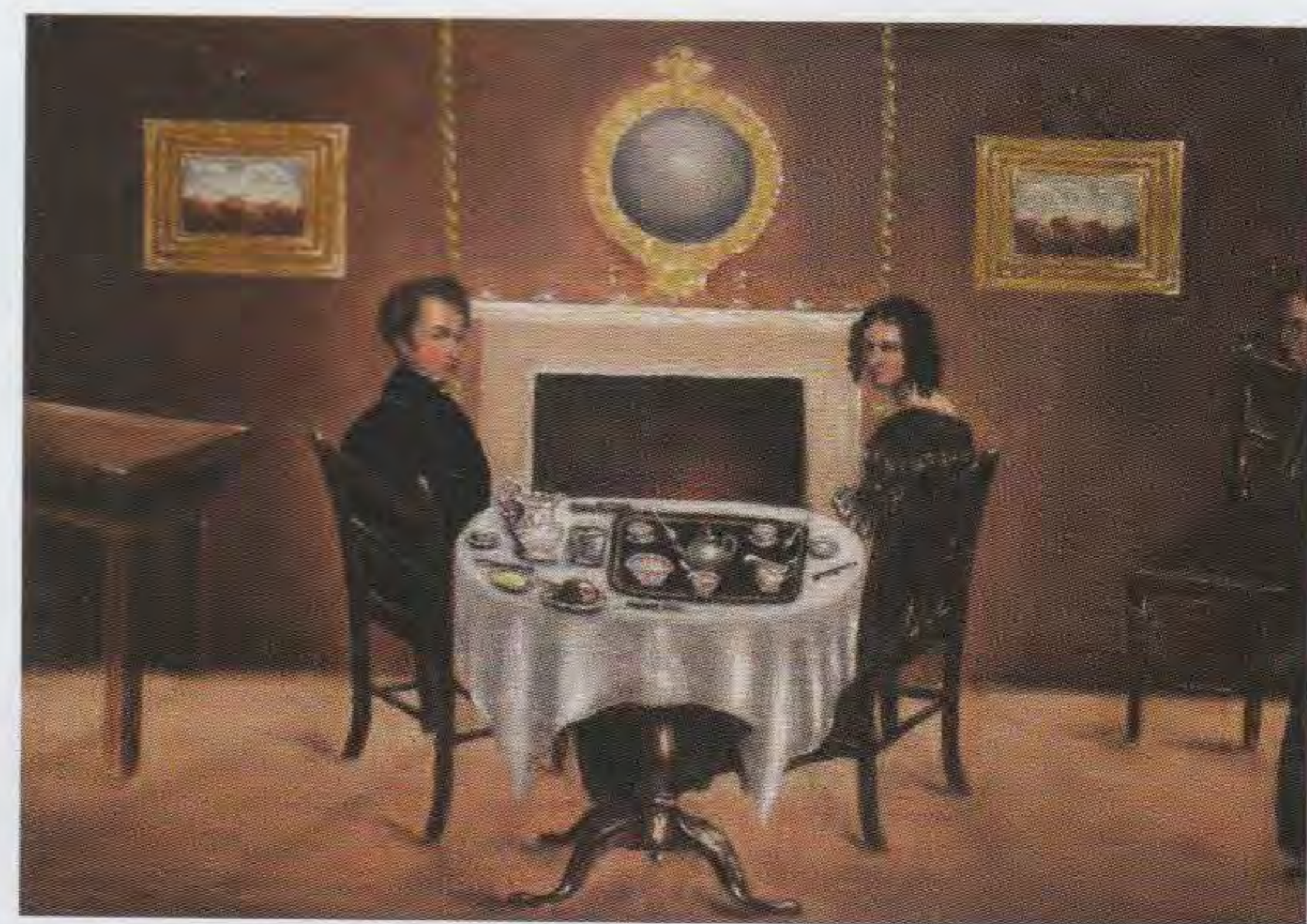
■ With over 50 years of experience, Marvin Alexander is truly established in the world of lighting, respected by distinguished decorators and architects alike. To meet the growing demand for antique lighting, the company launched the 'L'Etoile' collection, with its vast array of high-quality reproduction chandeliers, lamps, candelabras, candlesticks and decorative accessories. Most of the models are made using techniques that have been used for centuries: sand casting, lost-wax casting and glass blowing. Marvin Alexander, 315 East 62nd St, New York, NY 10065 (001 212 838 2320; marvinalexanderc.com).

■ Evitavonni has gone back to old-school Hollywood glamour with its bedroom collection. Indulge yourself with deep-buttoned headboards, floor-length curtains, metallic-trimmed cushions with delicate embroidery – all available in an elegant palette of silver, charcoal and deep brown. For the finishing touch, go for glass or crystal lighting. Elegant chandeliers, as well as warm-gold lampshades, complement existing colours. Evitavonni, 27 Station Rd, Chobham, Surrey GU24 8AQ (0800 130 3180; evitavonni.co.uk).

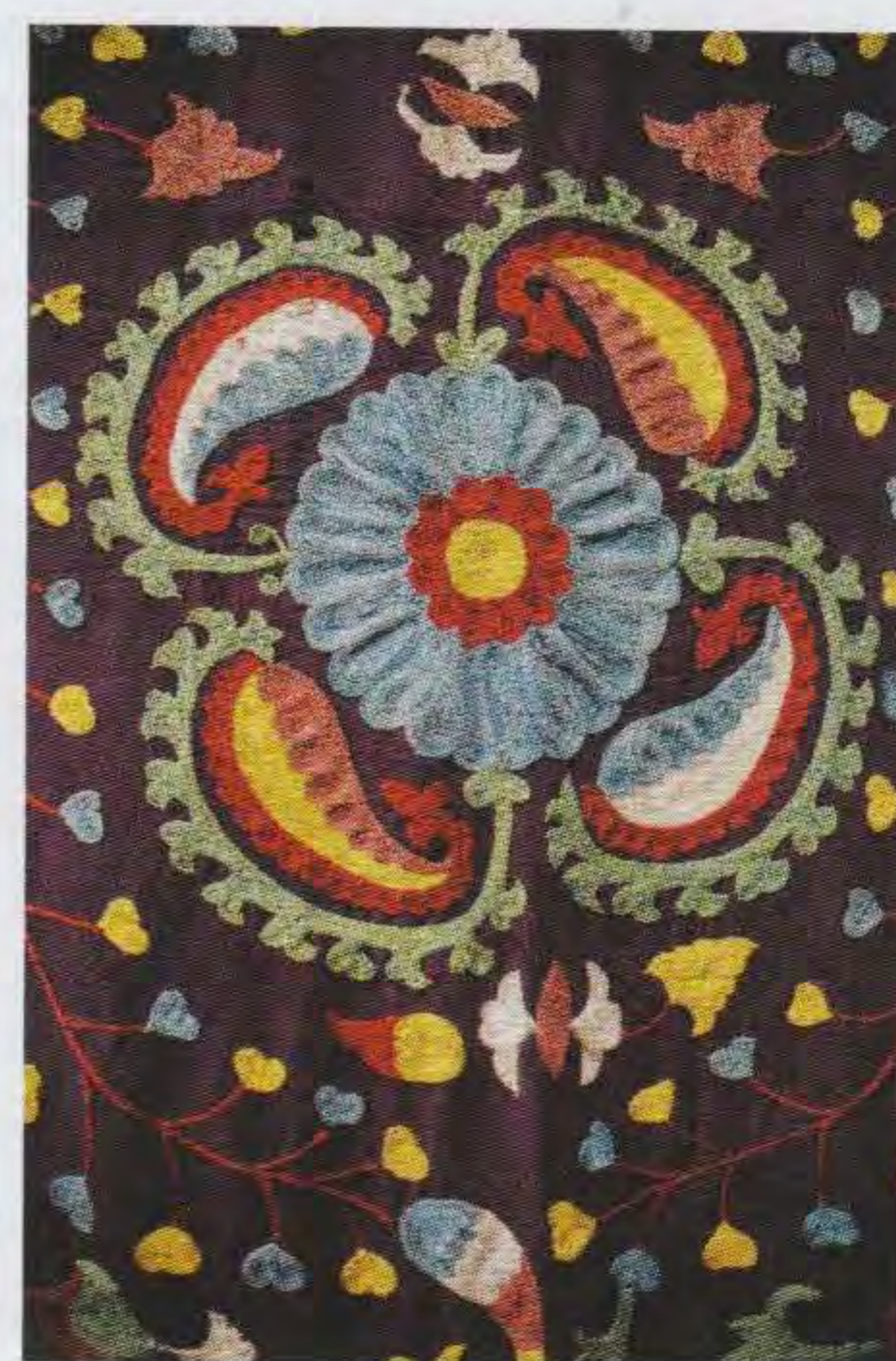
■ Visitors to Richard Morant's showroom in Notting Hill will discover a treasure trove of rugs and carpets from all over the world. Customers can find flatweave kilims from Turkey, durries from India, embroidered *suzanis* from Asia, bedcovers and cushions as well as beautiful and rare antique examples. Richard also designs his own carpets and rugs; customers are encouraged to discuss their requirements with him. Richard Morant, 27 Chepstow Corner, Chepstow Place, London W2 (020 7727 2566; richardmorant.com).

■ Founded in 1989 Ty Nant Water produces the highest-quality water in their factory in Ceredigion. Available still or carbonated, the water is sourced from beneath the Cambrian Mountains. The factory sits within 300 acres of organically maintained pastureland and forestry, and the firm's environmental policy extends to its bottles, which are made from blue and clear glass and plastic, all of which can be recycled. For details, ring 01974 272111, or visit visit tynant.com.

■ Aiming to unite European craft skills with an English aesthetic, sisters Gytha Bouchon and Amber Aikens have set up Nuttall Home to produce furniture of the highest quality. Each piece is hand-finished and designed to last for generations, using the finest artisanal skills and fabrics such as cashmere, angora, silk and linen from the Loro Piana 'Interiors' range, which are hard-wearing as well as sumptuous. Visitors to the Chelsea showroom can find both contemporary and traditional sofas, club chairs, ottomans and daybeds. Nuttall Home, 2 Pond Place, London SW3 (020 7584 8989; nuttallhome.com) ■



From top: bedroom furnishings by Evitavonni; English Naive School painting, c1850, at Robert Young Antiques; 'Harley Pinto' lever from The Beardmore Collection; 'Delano' chandelier by Marvin Alexander;



silk wall hanging, or bed cover, at Richard Morant; 'Florence' foot stool by Nuttall Home; 'Alcova' bed by B&B Italia